



Louisiana Office of  
Community Development  
Disaster Recovery

# Jumpstarting Your Disaster Recovery

Jeff Haley | Deputy Executive Director

1

## State of Louisiana’s Allocations for 2020 and 2021 Federally Declared Disasters



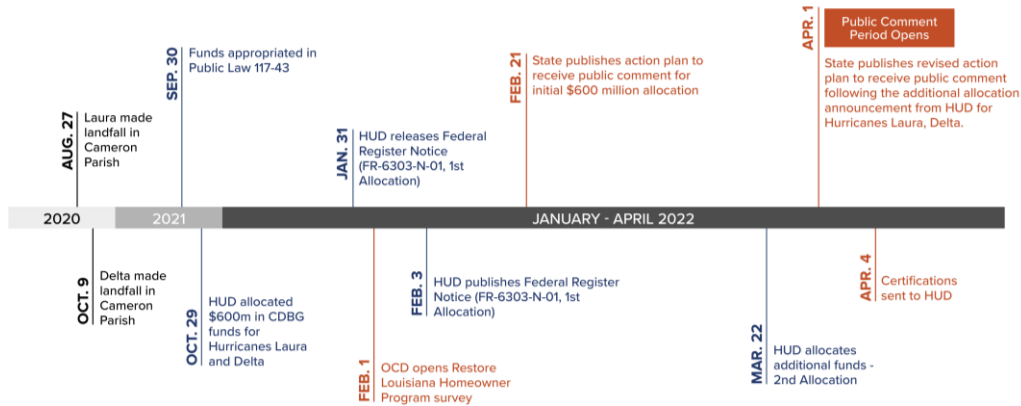
Louisiana has been allocated more than \$3.1 billion for all eligible storms.

Qualifying Event	Grant Agreement Signed By HUD	Funding Allocation
Hurricane <b>Laura</b>	First Allocation of \$600M: September 28, 2022	\$1 billion
Hurricane <b>Delta</b>	Second Allocation of \$450M: November 4, 2022	
May <b>Severe Storms</b>	First Allocation of \$1.2B: November 4, 2022	\$2.1 billion
Hurricane <b>Ida</b>	Second Allocation of \$831M: September 28, 2023	

2



# Disaster Funding Timeline

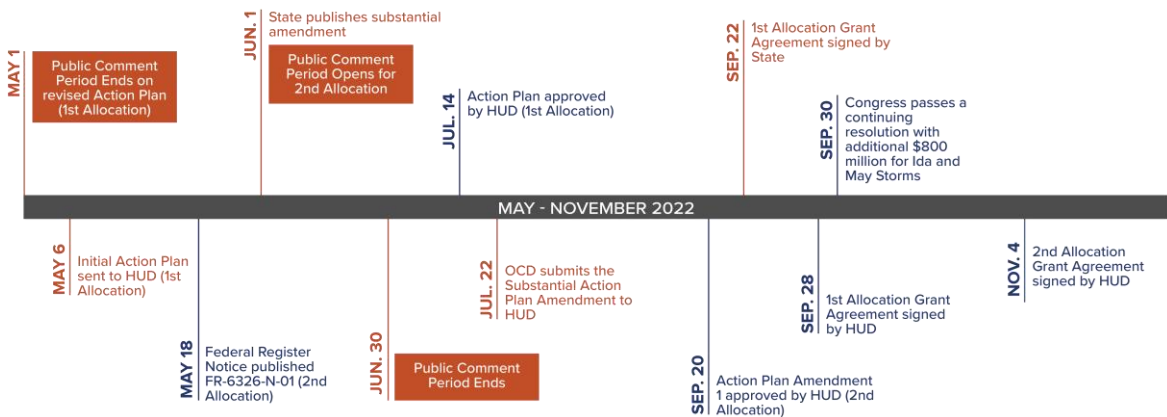


Louisiana Office of Community Development — Disaster Recovery Unit

3



# Disaster Funding Timeline



Louisiana Office of Community Development — Disaster Recovery Unit

4



# Taking Proactive Measures



Through its experience administering recovery programs throughout the state, LOCD-DR has been able to leverage lessons learned and implement best practices to more effectively and efficiently launch programs that provide Louisiana communities with **critical recovery assistance**.

5



# 2020-2021 Program Allocations

ECONOMIC DEVELOPMENT PROGRAMS		HOUSING PROGRAMS			
Small Business Loan and Grant Program	ALLOCATED: \$96.15M	Soft Second Mortgage Assistance	ALLOCATED: \$15M	Permanent Supportive Housing Program (PSHP)	ALLOCATED: \$31M
	DISBURSED: \$34.26M		DISBURSED: \$1.4M		DISBURSED: \$0
INFRASTRUCTURE PROGRAMS		Middle-Market Loan Program (MMLP)	ALLOCATED: \$60M	FMA-SWIFT (Non-Federal Share Match)	ALLOCATED: \$3M
Nonfederal Share Match Program	ALLOCATED: \$240.79M		DISBURSED: \$273,940		DISBURSED: \$
HMGP Global Match Program	ALLOCATED: \$77.33M	PRIME (Piggyback) Program	ALLOCATED: \$722.95M	Housing Buyouts	ALLOCATED: \$100M
DISBURSED: \$0	DISBURSED: \$0		DISBURSED: \$35.6M		DISBURSED: \$0
Resilient Communities Infrastructure Program	ALLOCATED: \$465M	Rapid Rehousing Program	ALLOCATED: \$25M	Restore Louisiana Homeowner Assistance Program	ALLOCATED: \$1.07B
	DISBURSED: \$573,370		DISBURSED: \$2.48M		DISBURSED: \$527.57M
Local and Regional Watershed Projects and Program	ALLOCATED: \$20M	Rental Restoration and Development Program (RRDP)	ALLOCATED: \$40M	Interim Housing Program	ALLOCATED: \$20M
	DISBURSED: \$0		DISBURSED: \$1.09M		DISBURSED: \$5.98M
ADMIN + PLANNING: \$136.47M (\$2.2M DISBURSED)		Flood Insurance Program	ALLOCATED: \$1.5M	Homeless and Housing Stability Development Program	ALLOCATED: \$26M
			DISBURSED: \$1.34M		DISBURSED: \$0

6



## Where We Are Today: Louisiana Restore Homeowner Program

- **20,740** applications submitted, representing **81%** of the invited population.
- Of the applications submitted, only **262** applications, or **1%**, are still pending grant determination.
- There has been a total of **12,742** grant awards offered to homeowners, totaling **\$930,376,429.16**.
- Of those, **10,377** homeowners have closed on their grant agreements, obligating **\$761,741,300.54**.

**Grant Awards Offered:**  
**\$930,376,429.16**

**Funding Disbursed:**  
**\$373,757,719.62**

**Average Award Amount:**  
**\$72,981**

Number of Projects Completed as of Sept. 2, 2024: **6,983**



## How We Got Here

### Action Plan Development – Determining Unmet Needs

- Referenced previous Federal Register Notices from prior appropriations to **anticipate guidance**
- In referencing previous FRNs, we were able to proactively develop the framework for the state's action plan ahead of time
- The state immediately began **citizen engagement efforts** following the 2020 disasters to gather data regarding impacts and unmet needs, beginning with local officials and personnel in the impacted communities.
- As part of the action plan process, the state used best available data sources to analyze **unmet needs** in impacted communities throughout the state.
- Detailed analyses of **losses sustained** and other available resources (FEMA, HUD, SBA) help us determine the dollar thresholds associated with damage in housing, infrastructure and economic revitalization.
- Review previous programs that can be refined for second iteration



# How We Got Here

---

## Program Survey

- To help determine **prioritization** for program assistance, the survey included questions related to:
  - Household income
  - Homeowner age
  - Whether any member of the household has a disability
  - Assistance applied for and/or received from other federal sources (FEMA, SBA, etc.)
  - Assistance received from insurance providers
  - Whether the damaged home's repairs are complete or incomplete
- The survey made the application process **more efficient** as every homeowner had their information pre-populated in the system.
- Along with streamlining the process for inviting potentially eligible homeowners to apply for assistance, information provided in the survey helped the program continue analyzing unmet needs along with beginning the ERR.



# How We Got Here

---

## Data Tools

### Data

- Prior to the official program launch, the state's software services partner was able to embed **FEMA IA data** into the program survey submission portal.
- Since applying for FEMA Individual Assistance was a criteria for the Restore Louisiana Homeowner Assistance Program, populating this information into the portal ensured that only those homeowners who met this baseline criteria were able to submit the initial survey.
- This allowed the program to phase assistance, prioritizing the **most vulnerable**.



# How We Got Here

## Data Tools (continued)

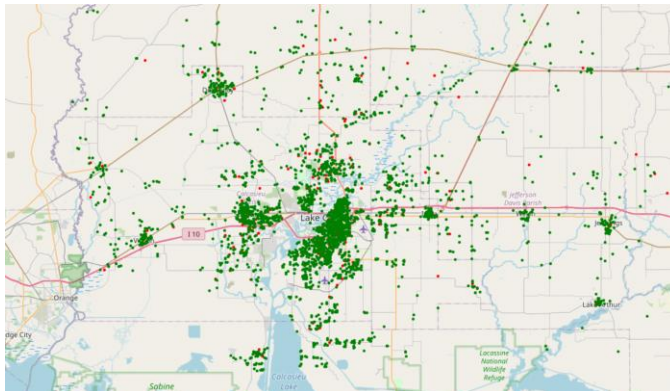
### Heat Maps

- Helped us assess and adapt our targeted outreach efforts for **enhanced efficiency**
- Allowed us to implement a data-driven approach and involved constantly assessing our datasets and analyzing our mapping tool to **identify gaps and gauge success**. Our maps used the FEMA IA dataset to reach the population most likely to qualify for program assistance, encouraging them to complete the initial program survey.
- Through all our efforts, we were able to see on a map where our efforts were most effective—or where we needed to direct more attention.



# Heat Maps Demonstrated

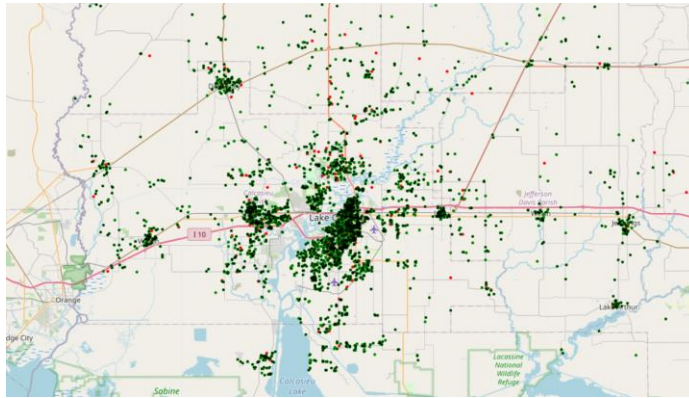
## Surveys Remaining in Calcasieu Parish (Green)





# Heat Maps Demonstrated

## LMI Surveys Remaining in Calcasieu Parish (Black)



Louisiana Office of Community Development — Disaster Recovery Unit

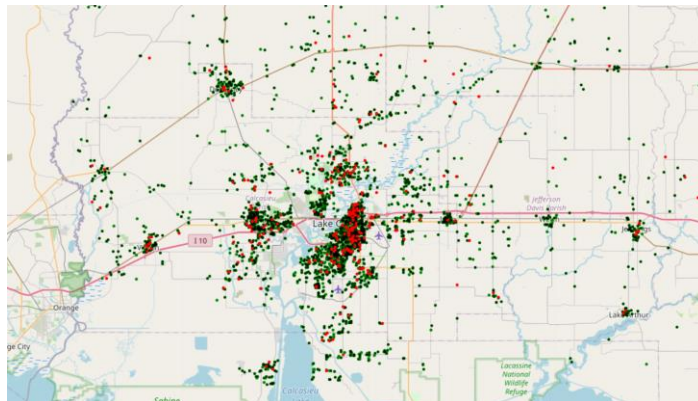
13

13



# Heat Maps Demonstrated

## Applications Remaining in Calcasieu Parish (Red)



Louisiana Office of Community Development — Disaster Recovery Unit

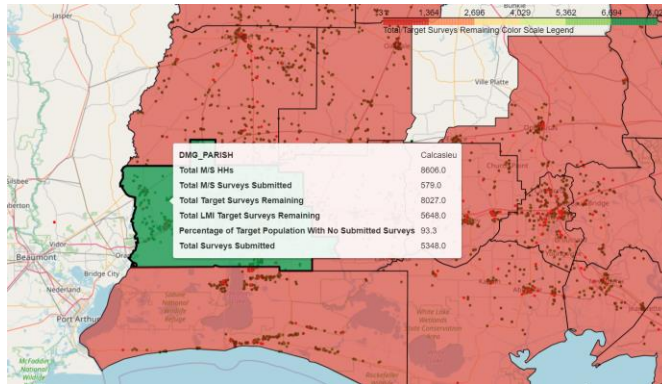
14

14



# Heat Maps Demonstrated

## Parish View – Target Remaining



Louisiana Office of Community Development — Disaster Recovery Unit

15

15



**Louisiana Office of  
Community Development**  
Disaster Recovery

# Thank You

*Jeff Haley | Deputy Executive Director*

16