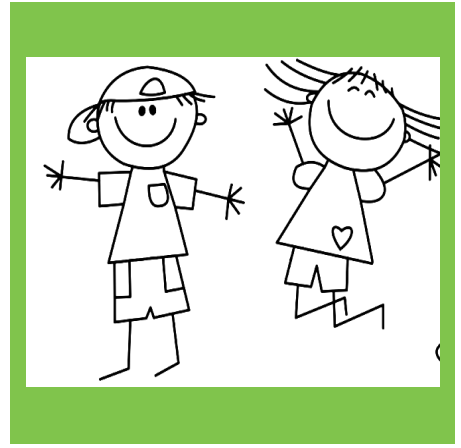


# Oregon CDBG-CV and Childcare Assistance



Fumi Schaadt  
Program & Policy Coordinator



# Childcare Need

- 72 percent of Oregon communities are childcare deserts.
- Equitable infrastructure of Childcare for Oregon's workforce
- Support the ecosystem
  - Streamlining Regulation and policy
  - Establishing financial Strategies



# CDBG – CV

## *Childcare Need*

Type of needs:

- Technical assistance
- Providers business capital assistance
- Facilities Growth
  - Securing site control (lease or purchase)
  - Repairs/ remodeling/ renovation
  - Expansion
  - New construction



## CDBG – CV

# *Limitations found in Child Care*

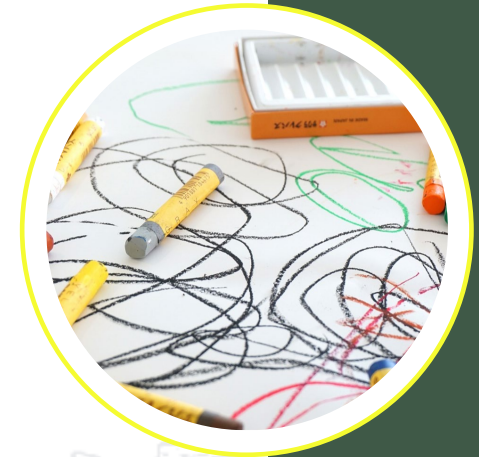
- Local network
- Multiple players & Funding silos
- Funding Sources and limitations
- Local Capacity
- Timing



## CDBG – CV

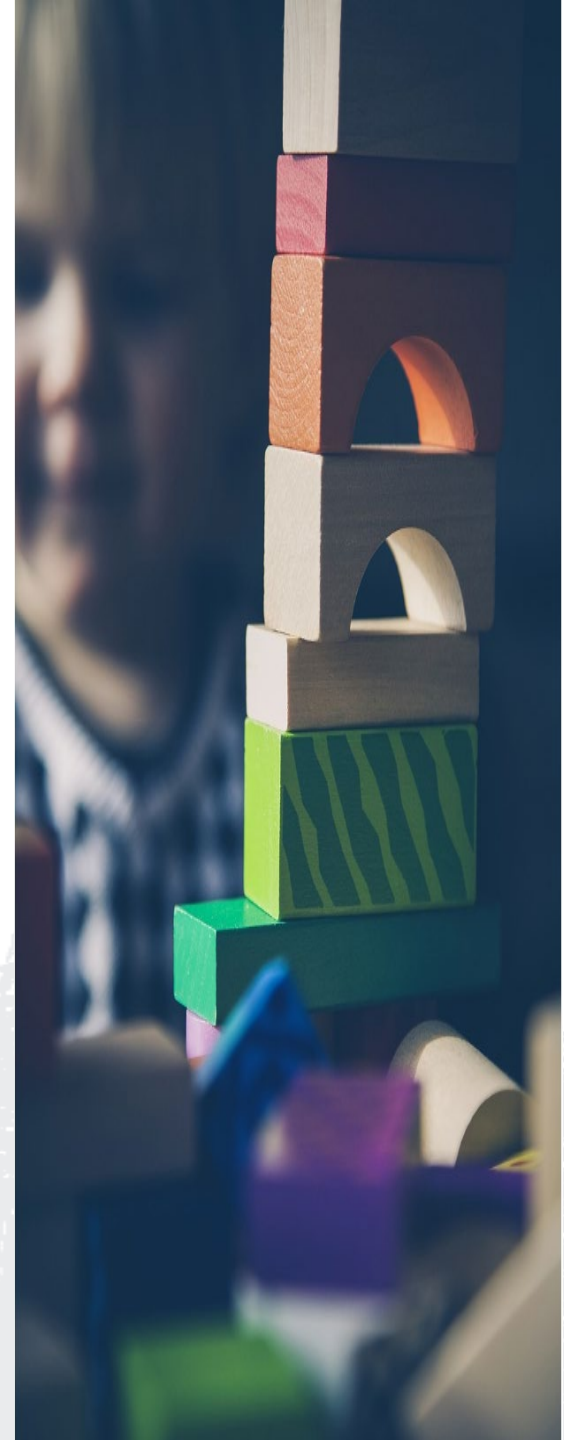
### *Local Jurisdiction role and CV solution*

- Fitting the puzzle together
- Fitting CDBG into the picture:
  - ✓ Additional services
  - ✓ Facilities expansion
  - ✓ LMI family voucher
- Understanding boundaries
  - Beneficiaries
  - Eligibility
  - Reporting



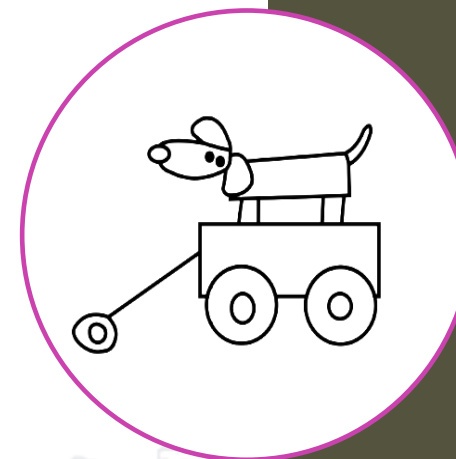
## **CDBG – CV *Lesson Learned and future opportunities***

- 5 Pilot Projects funded by CDBG-CV
  - ✓ Investing approximately \$1 million in total for rural Oregon areas
  - ✓ Benefiting up to 350 children
  - ✓ Opportunity for local funding collaboration



# *Future Opportunities*

- Governor's strategic plan :
  - Coordination of Effort
  - Workforce Housing & Child care
  - Additional funding
- CDBG Program realignment





# Thank You

Fumi Schaadt, CDBG Program & Policy Coordinator -  
[fumi.schaadt@biz.oregon.gov](mailto:fumi.schaadt@biz.oregon.gov)

971-239-9020

Jeremy McVeety, CDBG-CV Program Manager  
[Jeremy.MCVEETY@biz.oregon.gov](mailto:Jeremy.MCVEETY@biz.oregon.gov)

971-375-8051