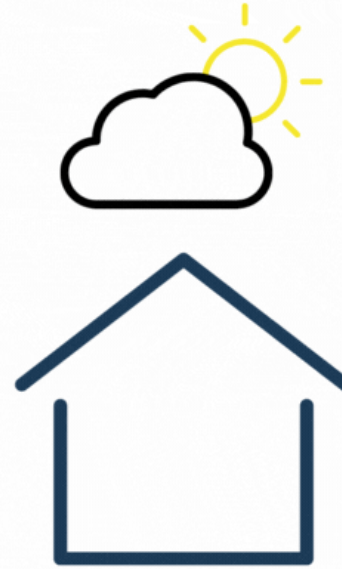


# North Carolina's Disaster Rehousing Response

Denise Neunaber, Co-Creator  
Redesign Collaborative

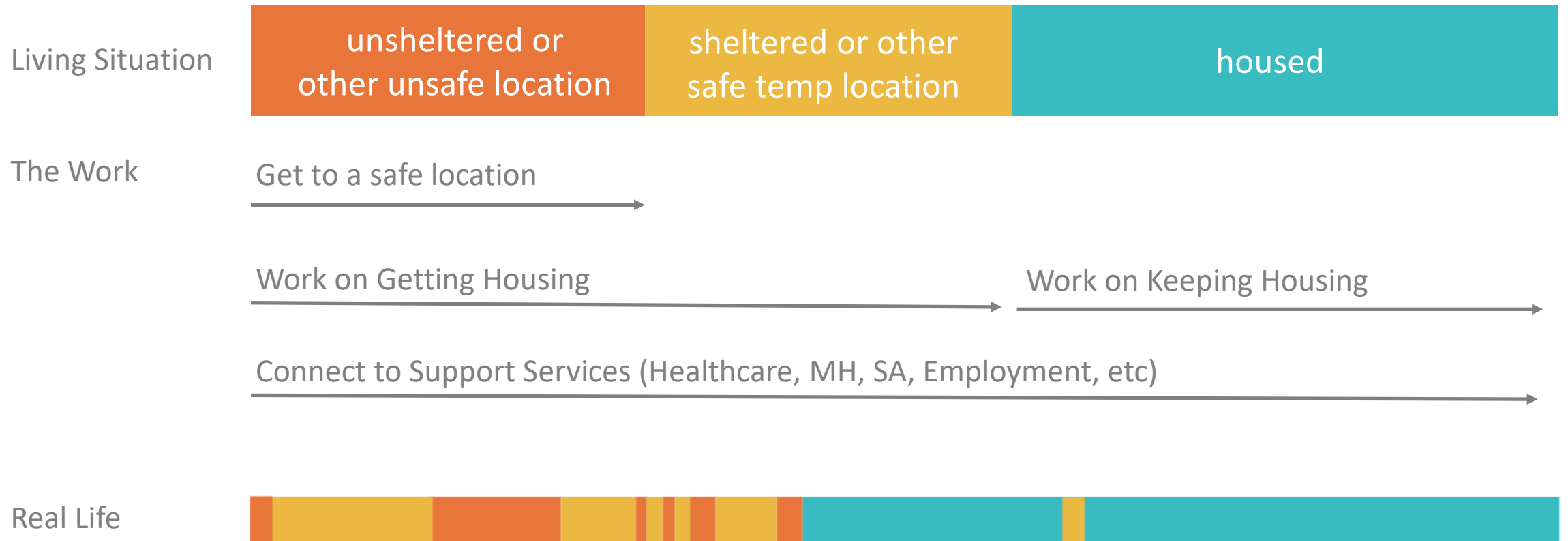


Housing Crisis



Safe, Stable,  
Affordable Housing

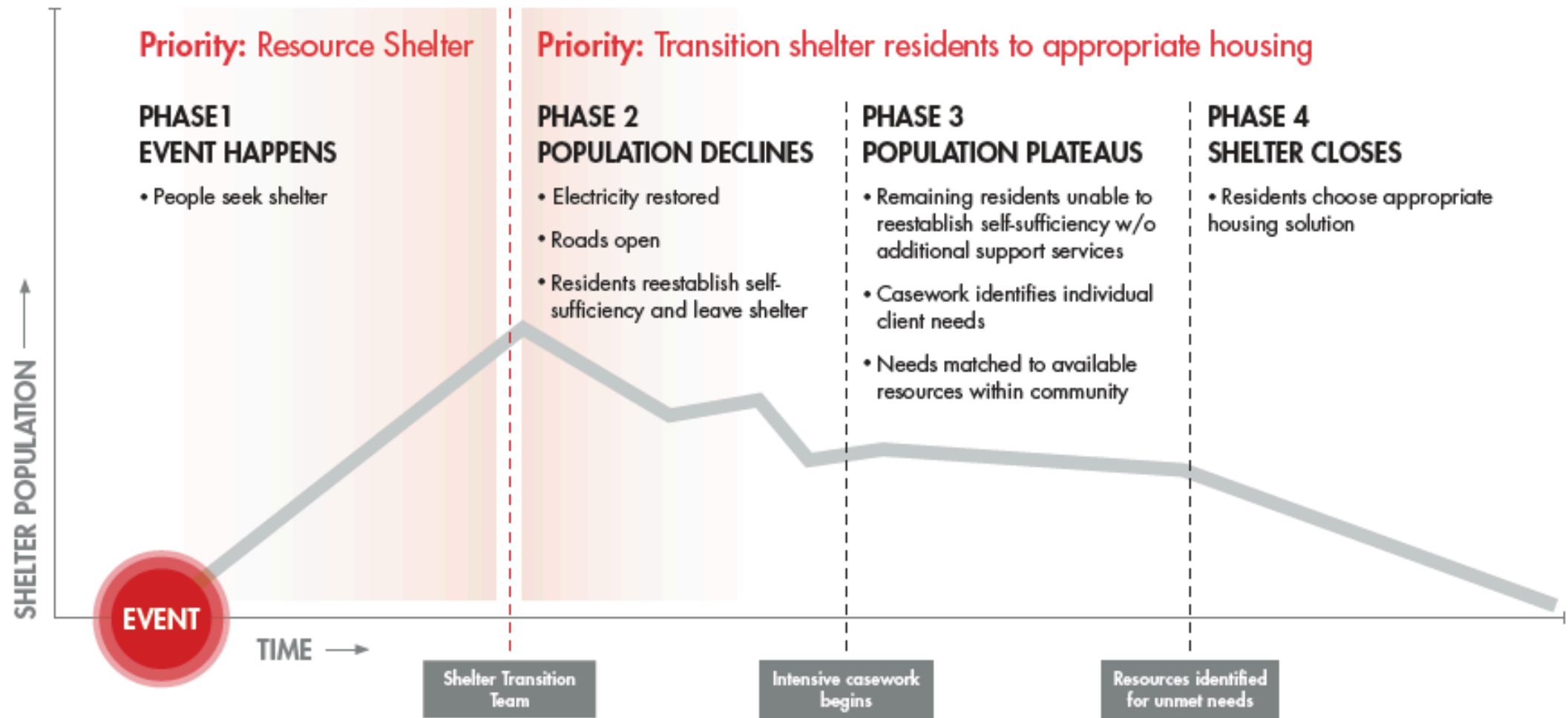
# Basic Rehousing Program Flow



# Same Work, Key Differences

- Many people on same timeline
- Additional partners and resources
- Orientation to action
- Assumption people should and can go back to housing
- Pressure for shelters to close

# Phases of Shelter Operations





**BACK @ HOME**  
NORTH CAROLINA

# Housing Navigation Assistance

## ASSISTANCE TO LOCATE A NEW HOME



- Recruit landlords to provide housing opportunities for individuals and families.
- Identify and select a rental property based on a household's unique needs (e.g. accessible units), preferences, and financial resources.
- Address issues that may impede a household's access to housing (such as credit history, arrears, and legal issues).
- Help individuals and families negotiate manageable and appropriate lease agreements with landlords.

# Rent and Move-In Assistance

SHORT-TERM FINANCIAL ASSISTANCE TO MOVE IN TO A NEW HOME



- Provide Financial Assistance to cover move-in costs, deposits, and the rental and/or utility assistance (typically six months or less) necessary to allow individuals and families to move immediately and to stabilize in permanent housing.
- Supply Move-In Kits for the essentials— mattresses, pillows, bedding, towels, and food boxes— at lease signing so families can move in right away.
- Supply additional Move-In Kits of furniture and household goods.



# Housing Stabilization Services

ASSISTANCE TO STABILIZE A NEW HOME TO ENSURE FUTURE RESILIENCY +  
SELF-SUFFICIENCY



- Provide appropriate and time-limited services and supports available to families and individuals to allow them to stabilize quickly in permanent housing.
- Monitor participants' housing stability and be available to resolve crises.
- Provide or assist the household with connections to resources that help them improve their safety and well-being and achieve their long-term goals. This includes ensuring that the household has access to resources related to benefits, employment and community-based services so that they can sustain rent payments independently when rental assistance ends.





# Ingredients

## **Flexible Financial Assistance**

Rental Assistance

Utility Assistance

Rental + Utility Arrears

Deposits (Rent, Utility, Pet)

Barrier Busters

Moving Costs

Household Goods

## **Housing Navigation**

Housing Search

Liaison/negotiation with rental properties

Move-In Fees

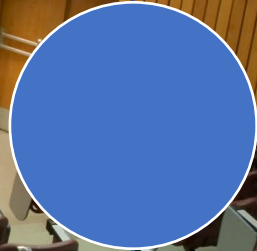
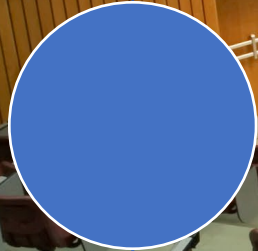
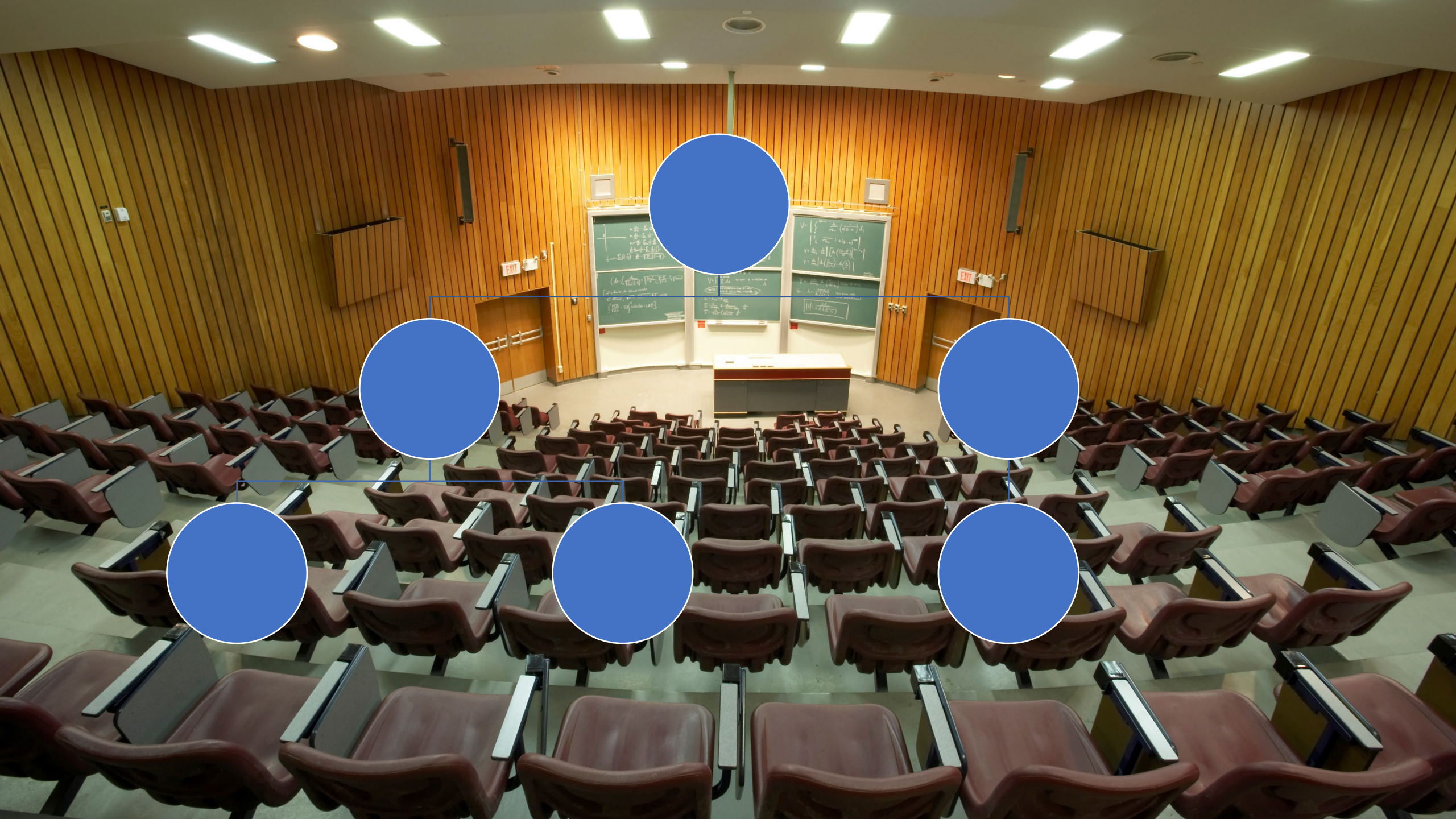
Upfit + Repairs

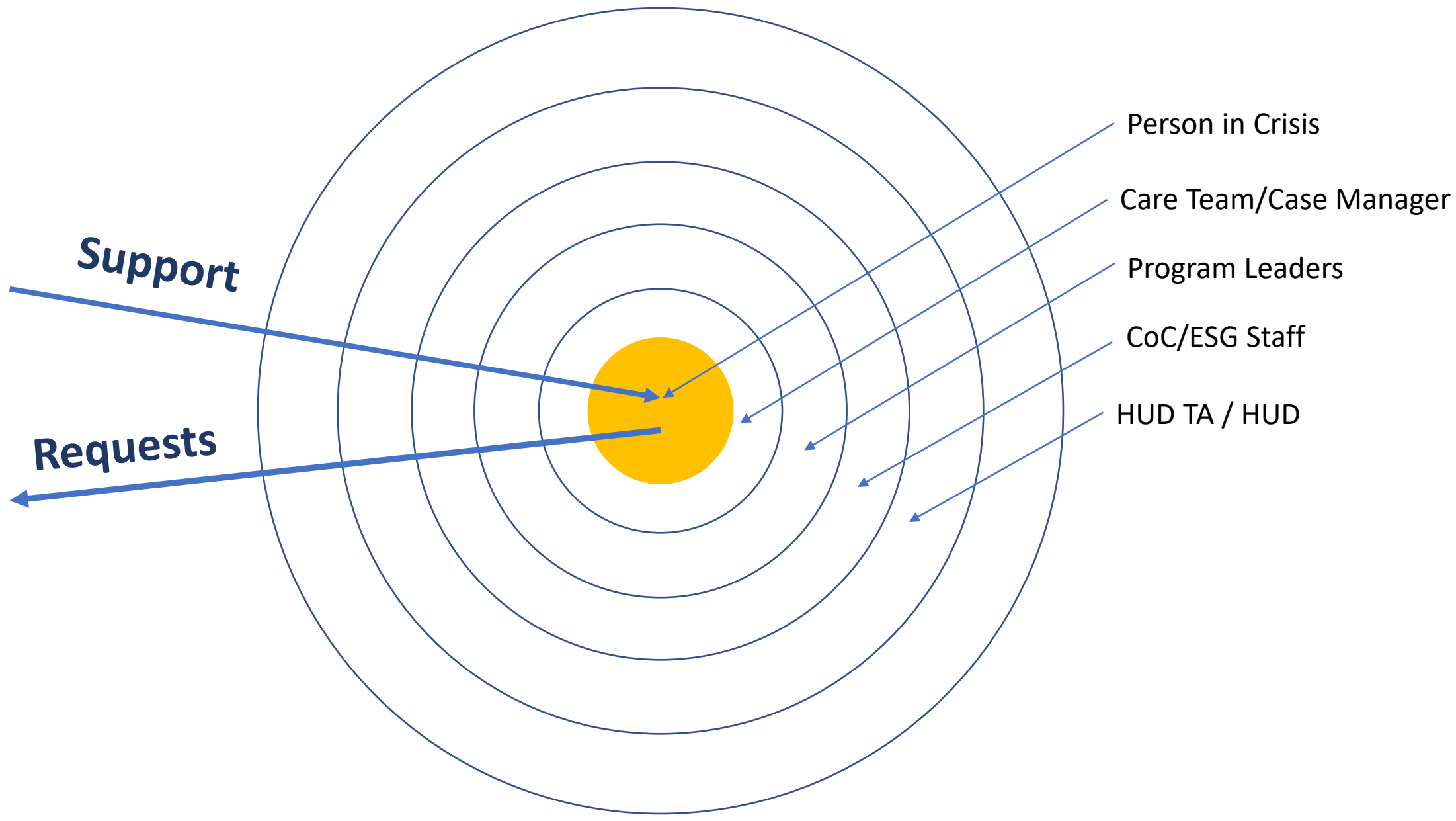
## **Housing Stabilization Case Management**

## **Problem-Solving Conversations**

## **Legal Services**







Person in Crisis

Care Team/Case Manager

Program Leaders

CoC/ESG Staff

HUD TA / HUD

**Support**

**Requests**

# Additional Information

[ncceh.org/backathome/rehousingagencymaterials/](https://ncceh.org/backathome/rehousingagencymaterials/)

[backathome.org](https://backathome.org)

denise@redesigncollaborative.com